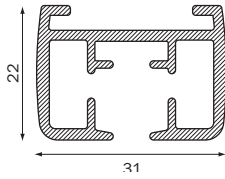


# 6200

## profile

**6200**  
567 gr/m

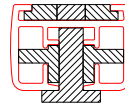


## bending

radius

- R 20 (1015)
- R 30 (1015)
- R 40 (1015)
- R 50 (1015)
- R >100 (1018)

filler position



## arch bending

Minimal radius: 150 cm.

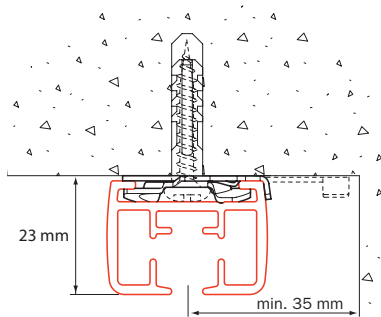
Arch bending: on request

Advised: choose a split stacked system, closing at the top.

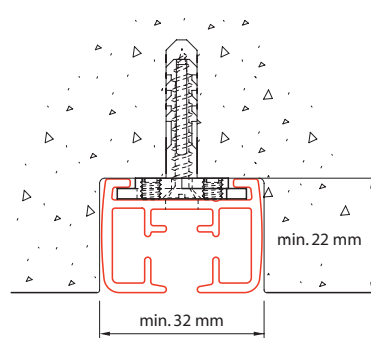
When opening the curtain, a single stack can behave uncontrollably, once a critical weight of the stack has passed the top of the arched system.

# Mounting

## ceiling, wall and recessed mounting

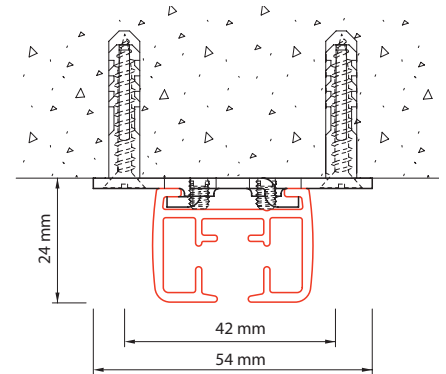


ceiling mounting with ceiling mounting clamp 6050: leave space to accommodate rotation of ceiling mounting clamp

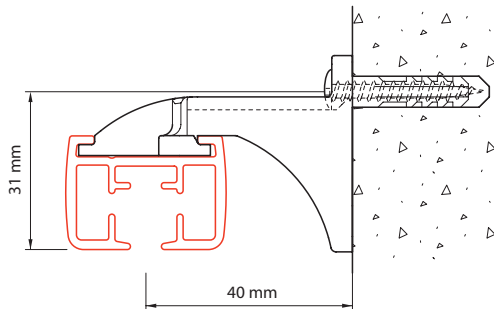


recessed mounting to or in ceiling with bracket 6055-2000

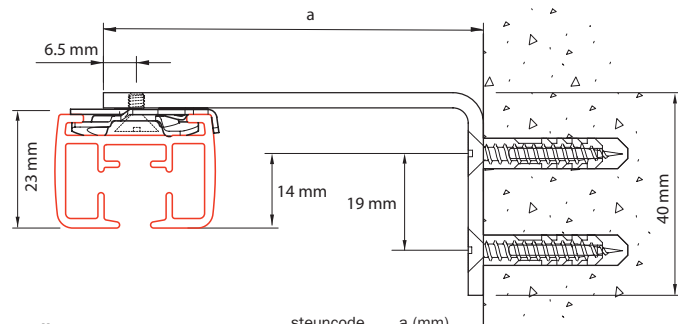
- when mounting in ceiling, take into account the wider pulleys
- curved systems: bend profile first then use as template for the rebate
- pre-drilling of profile by Goelst NL



ceiling mounting with ceiling bracket 6055-1000

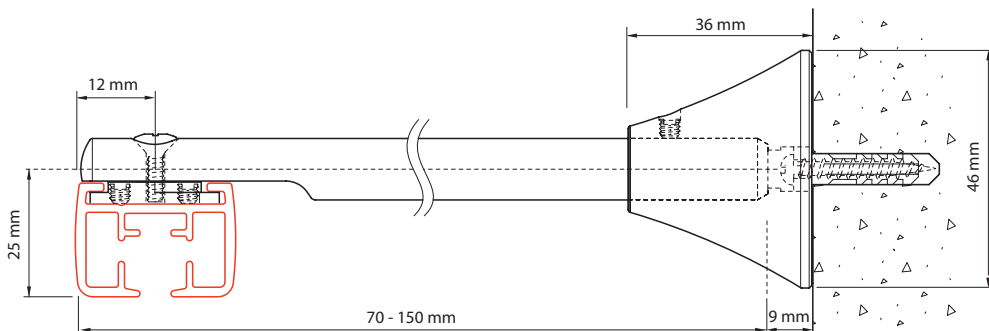


wall mounting with wall support 6051



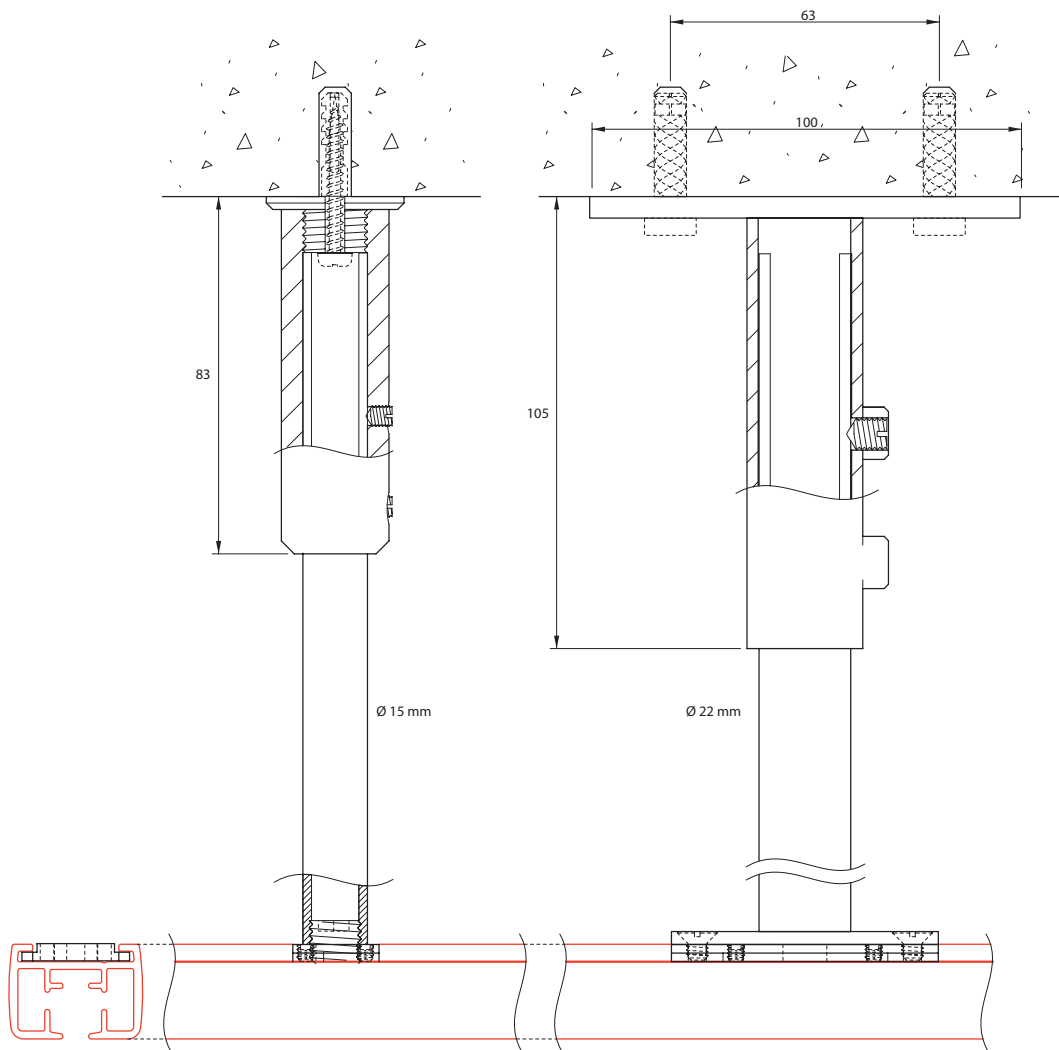
wall support with wall brackets 6015

steuncode	a (mm)
6015-05	50
6015-07,5	75
6015-10	100



wall mounting with extension bracket 6017, can be cut from 15 to 7 cm



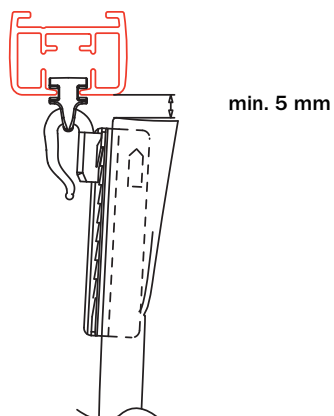
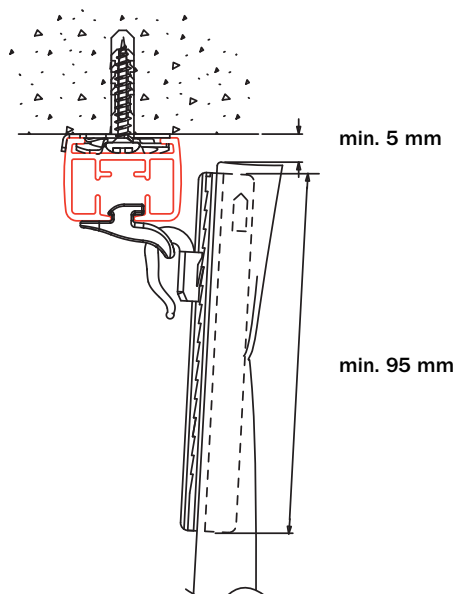


ceiling mounting 6200 with suspension hanger 4055 and mounting set 4055-30-20 (ceiling side: excluding screws and plugs)

max. load capacity of construction when perpendicular to its mounting: 30 kg (depending on quality of mounting on the ceiling side)

ceiling mounting 6200 with strut hanger 4064 and mounting set 4064-30-20 (ceiling side: excluding screws and plugs)

max. load capacity of construction when perpendicular to its mounting: 60kg (depending on quality of mounting on the ceiling side)



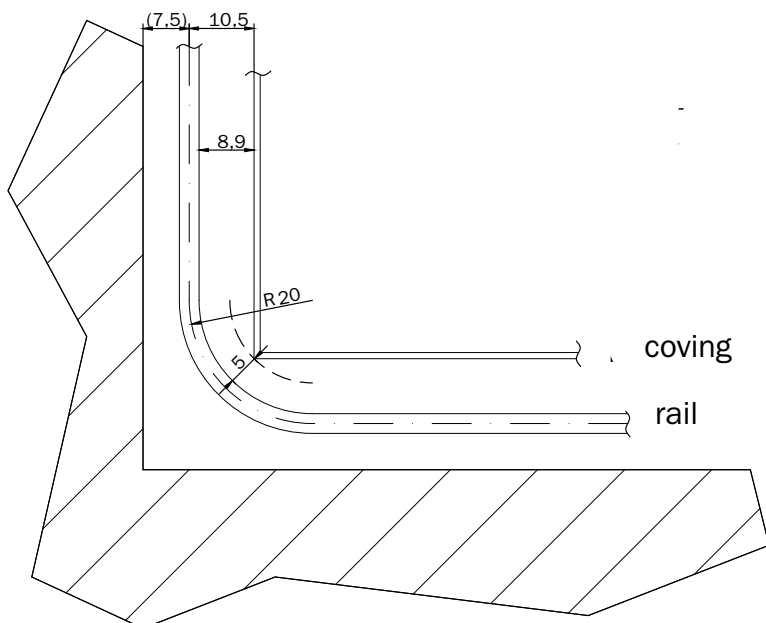
# Product example

## space for curves in coving

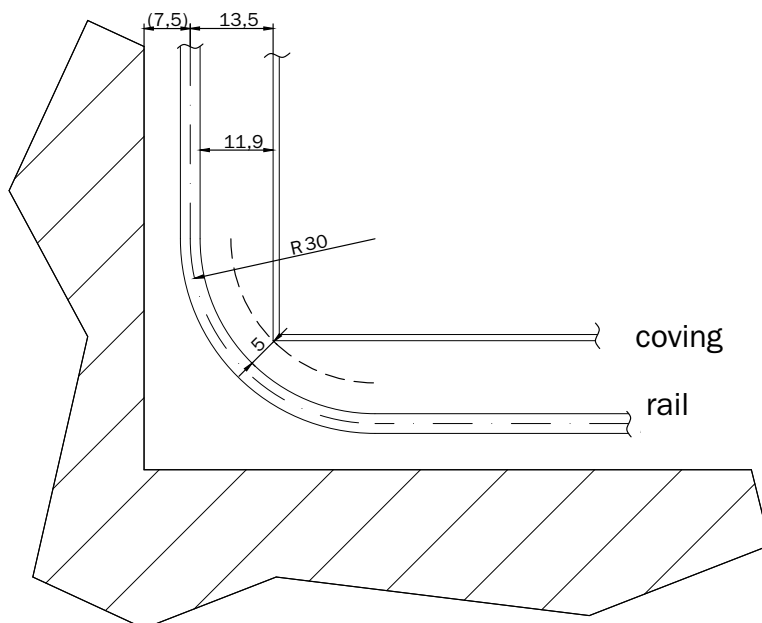
For example:

When working with a curve with a 20 cm radius, the required distance between the front of the rail and the inside of the coving is 8.9 cm (or 10.5 cm to the heart of the rail), in order to leave space for curtain folds in the inner corner of the coving.

R20



R30



- allowing 5 cm of space for the fold in the corner
- top view with 6200
- 7.5 cm from wall to heart of the rail is an example

